

richard
shephard
music
foundation



ST. GEORGE'S STUDY BRIEF

DEVELOPED BY:

Sing Education

IN COLLABORATION WITH:

Richard Shephard Music
Foundation





A NEW VISION FOR YORKSHIRE

Time for Change

With child poverty rates rising, Yorkshire children are among the most exposed to the economic consequences of the pandemic, with above average levels of young people living below the headline.



1 IN 3

Yorkshire children living in poverty



5.8%

Increase in poverty over the last 5 years

SHAPING LIVES FOR BETTER ▼

The Richard Shephard Music Foundation (RSMF) joined forces with Sing Education in 2021 to address a recognisable need for more primary school music across schools in North Yorkshire, particularly in areas of deprivation or isolation.

St George's School in Eastfield, Scarborough is a flagship delivery site within the school's music project with RSMF.

In this case study, we explore how our specialist music provision is running within the school, and the impact that it has had on musical skills development, pupil mental health and wellbeing, as well as overall school life at St George's.

OBSTACLES TO ACHIEVEMENT ▼

With a third of Yorkshire's children living in poverty, combined with an increase of 5.8% in poverty levels over the past five years, the impact on pupils, families and schools has been tremendous.

Local authorities and academic trusts have felt the pinch as well, reducing school funding for core subjects like music.

That said, it's still shocking that across the UK, 1 in 5 primary school teachers report there is no regular music lesson for their class.



"Music is a subject that all pupils can access in an equal way to express themselves. We must strive to ignite the aspirations of all students - the high achievers, those with special educational needs, as well as those with English as an additional language."

JOSH CADMAN, DIRECTOR - SING EDUCATION



A NEW MISSION FOR ST. GEORGE'S

Pupils Caught in Crisis



83%

Live in areas amongst 10% most deprived



22%

Free School Meals



22%

Special Educational Needs (SEN)



42%

Attract Pupil Premium funding

THE JOURNEY TO "OUTSTANDING" ▼

St. George's School is a day school for boys and girls in Scarborough. Opened in 1975 as a Roman Catholic voluntary aided school, St George's serves 110 pupils aged 5 - 11 years, with additional children in its Nursery Unit.

The school has improved greatly since a 2012 "Inadequate" rating. Monitoring visits and additional inspections followed. St. George's also converted to an academy under the St Margaret Clitherow Catholic Academy Trust (SMCCAT).

St. George's is now rated "Good" with 54% of pupils meeting the expected standard in reading, writing and maths.

MUSIC DONE DIFFERENTLY ▼

An in-depth consultation with St. George's revealed several music education approaches had been tried in the past but had not succeeded in adequately engaging students - namely online music lessons and a visiting choir leader.

The staff at St. George's had the additional desire to give their children experiences that they might not usually have access to, as well as a solid curriculum foundation.

Previously the school had a music specialist working at the school. After she left there was no one who could take her place.



83% of St. George's pupils live in an area amongst the 10% most deprived in England. Low parental involvement, low attainment on entry and persistent issues with pupil attendance and punctuality also serve to adversely impact educational achievement.

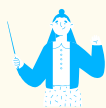
SCHOOL DATA, ST. GEORGE'S SCHOOL



NEW MUSIC SOLUTIONS



WHOLE SCHOOL



DEDICATED SPECIALIST



TIMETABLED LEARNING



INCLUSIVE METHODS



PUPIL IMPACT

A CURRICULUM THAT MOTIVATES ▼

At St. Georges, music curriculum lessons are delivered by specialist teacher, Amanda Bond, from Sing Education.

Amanda creates a positive learning environment through positive classroom management, and singing led, child-focused lessons.

Children receive access to high quality music resources and instruments to reinforce the ambitions of the curriculum.

Each class in the school has their own weekly music lesson and the music curriculum is made up of half-termly units, with step-by-step progression.

A CURRICULUM THAT DELIVERS ▼

Music lessons are monitored by Amanda, school staff and Sing Education's Yorkshire Teaching and Training Coordinator Katie Brier. The team use a variety of strategies such as lesson observations, staff discussion and regular 'Pupil Voice' surveys.

Feedback is used to inform improvements in the implementation of music.

Now in their fifth term of music specialist provision, programme results have been both positive and dramatic.



"The children seem to have blossomed. They are happier and more engaged in lessons. They look forward to assemblies and other activities involving singing such as a sharing assembly where the Y5 and Y6 shared their WW2 songs with the school."

AMANDA STONE, HEADTEACHER - ST. GEORGE'S SCHOOL



NEW LEARNING OUTCOMES

Every Child Has a Voice

Bringing world-class music tuition to St. George's pupils with classroom music, workshops, and performance opportunities.



113

Curricular Music Pupils



+ 86

KS1/2 Singing Assembly



+ 20

Lunchtime Choir

ACTIVE, HIGH-ENERGY LESSONS



St. George's pupils progress through a challenging vocal and instrumental curriculum, as well as participate in a variety of extracurricular enrichment activities.

The children have the chance to put what they learn in their lessons into practice with a weekly 40 minute singing assembly with Amanda. This in turn supports other singing practices that take place throughout the week at school.

The children have plenty of opportunities to perform and show off their musical skills, not only within their lessons and assemblies, but also as part of the school choir.

SINGING LED, CHILD-FOCUSED MUSIC



Pupils have the chance to display their musicianship skills and understanding of the key musical elements through demonstration and discussion during lessons and beyond.

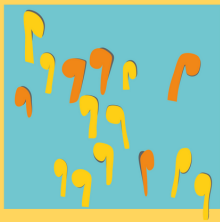
Children understand with increasing confidence, the cultural impact of music on the world around them and the role that their own culture has contributed to this.

Children will go on to the next stage of education with detailed and foundational knowledge that will help them to pursue music in the future should they choose to.



"'Blown away' by the level of musical skill, knowledge and enthusiasm of the children after only one term of music lessons."

**RSMF TRUSTEES, LOCAL SCHOOL LEADERS AND MUSIC STAFF
ST. GEORGE'S MUSIC SHOWCASE - AUTUMN 2021**



richard
shephard
music
foundation



A NEW MODEL IN MUSIC EDUCATION

RICHARD SHEPHARD MUSIC FOUNDATION



The Richard Shephard Music Foundation (RSMF) is a registered charity in England and Wales (1189066), established to recognise and build on the work of Dr Richard Shephard.

As composer, conductor, teacher, performer and administrator, Richard contributed more to the musical life of Yorkshire than anyone of his generation.

Richard's ambition for the Foundation was to help children in disadvantaged areas to develop their musical talent and to experience the transformative power of music.



SING EDUCATION



The singing voice is our primary instrument. It's the first way we communicate. As such, Sing Education's method, teacher training and classroom experience all bloom from that single, deep root.

Accessibility. Attainment. Development. Expression. Music is an academic subject that all pupils can access in an equal way to express themselves.

Teaching 10,000 EYFS, KS1 and KS2 pupils each week, Sing Education - it's not just what we do, it's who we are.



3,500

Year 1 Yorkshire target
RSMF & Sing Education



5,000

Year 2 Yorkshire target
RSMF & Sing Education



10,000

Current weekly pupils
Sing Education



"I would definitely recommend Sing Education to other school leaders. The children look forward to their music lessons. The teacher quickly built up a good rapport with the children and staff. She is excellent at her job and fits well into the school."

AMANDA STONE, HEADTEACHER AT ST. GEORGE'S SCHOOL